

# TAMARA GAVIN


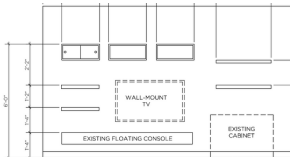

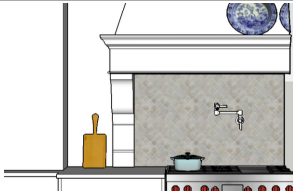

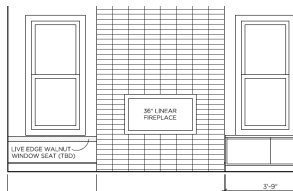
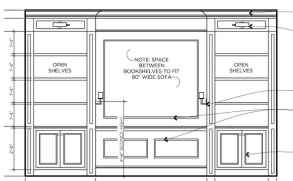
INTERIOR DESIGN

## DESIGN DRAWING RATES

### ELEVATIONS OF COMMON DESIGN FEATURES

*Pricing for IVY designers - rates subject to change*

Don't see what you need listed below? Just ask!

		2D CAD .PDF	3D SKETCHUP .JPG	DESIGN BUNDLE (CAD + SKETCHUP)
	<b>Wall Treatment Detail</b>			
	Single Feature Wall (shiplap, paneling, etc)	\$259	\$259	\$407
	Full Room (multi-wall)	\$370	\$370	\$629
	Treatment at Stair walls (multi-wall)	\$444	n/a	n/a
	<b>Product Placement Diagram</b>			
	Art Gallery wall layout	\$259	n/a	n/a
	Floating Shelves, hooks etc.	\$296	n/a	n/a
	Light Placement (Sconce location, pendant over island, etc)	\$185	n/a	n/a
	<b>Bathroom Details</b>			
	Vanity Wall (cabinetry + mirror + sconces)	\$407	\$407	\$703
	Feature Tub Wall	\$370	\$370	\$629
	Shower Tile Layout (multi-wall w/ niches and plumbing)	\$518	inquire	inquire
	<b>Kitchen Details</b>			
	Custom Range Hood	\$370	\$370	\$629
	Backsplash Detail	\$370	inquire	inquire
	Complete Set of Elevations - all cabinetry (multi-wall)	\$629	inquire	inquire
	<b>Custom Wall Features</b>			
	Mural Layout	\$660	inquire	inquire
	Divider Wall (Slats, factory window panel, etc)	\$296	\$296	\$481
	Murphy Bed Wall, Bunk Wall	\$370	\$370	\$629
	<b>Fireplace</b>			
	Fireplace front elevation (with or without TV)	\$370	\$370	\$629
	Fireplace with Built-ins	\$518	\$518	\$925
	<b>Built-ins</b>			
	Bookshelves, Display Niches	\$370	\$370	\$629
	Mudroom Wall (hooks, bench, lockers, etc)	\$370	\$370	\$629
	Window seat / banquette (multi-wall)	\$296	\$296	\$481

## INTERIOR DESIGN

Pricing for IVY designers - rates subject to change

A detailed floor plan diagram of a living room layout. The room is defined by a large window on the left wall, a fireplace on the right wall, and a door at the bottom right. The layout includes:

- Seating:** A large sofa (86 x 35) and a matching ottoman (28 x 28) are positioned in the center. A smaller sofa (62 x 33) is located near the fireplace. A floor lamp is placed near the large sofa.
- Tables:** A coffee table (45 X 32) is in the center. A side table (32w x 31d) is next to it. A small table (16 x 16) is near the fireplace.
- Rugs:** An 8 x 10 rug is in the corner near the window. A 9 x 12 rug is in the center. A 39 x 78 rug is in the corner near the fireplace.
- Decor:** A mirror is on the left wall. A 30 x 30 SWVIL is on the left wall. A 24" circle is on the left wall. A 15" circle is on the left wall. A 25w x 20d is on the left wall. A 36w x 38d is on the left wall.
- Dimensions:** The room is 61w x 18d x 32 h. The fireplace is 61w x 18d x 32 h. The door is 61w x 18d x 32 h.



# TAMARA GAVIN

INTERIOR DESIGN

## DESIGN DRAWING RATES

### AVAILABLE ADD-ONS

*Pricing for IVY designers - rates subject to change*

#### AVAILABLE ADD-ONS (Inquire for pricing):

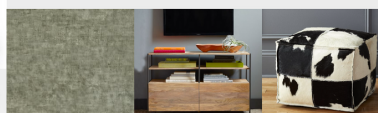
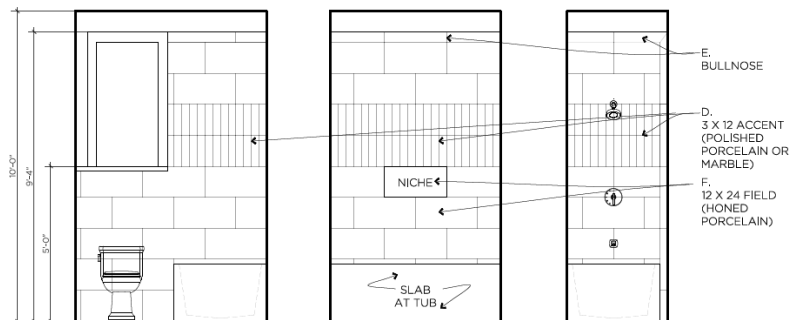
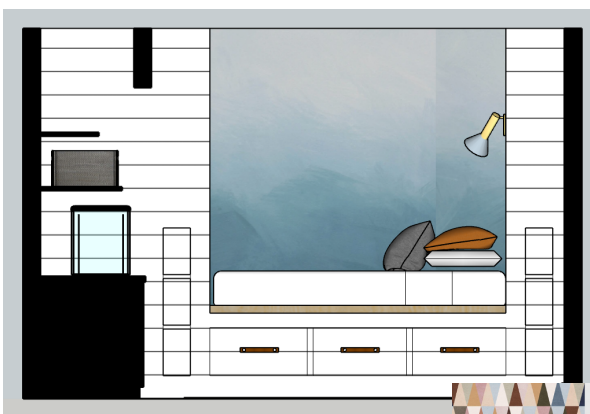
**Multiple Options:** If you want to show your client multiple options and/or you need to see multiple options, I do offer a discount for additional options of the same design feature.

**Logo/Brand:** For an additional fee of \$30, I will add your logo to a CAD titleblock or put SketchUp concepts into a branded presentation layout.

**Original files:** If you also want the original .dwg file, there is a one-time \$145 fee. It's then \$20 for each order after that. For the .skp file, it is \$20 for each order.

**Rush 1-week delivery:** Limited availability. \$150 per drawing.

\$74/ hour is my hourly rate for IVY Designers for custom quotes and most additional charges.



**TEXAS COOL**  
LIVING ROOM MOOD BOARD

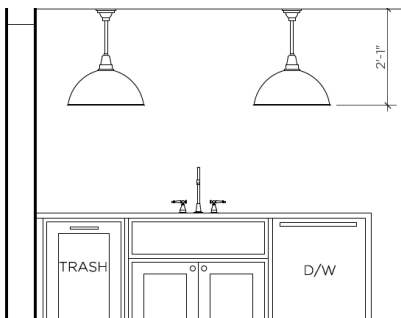
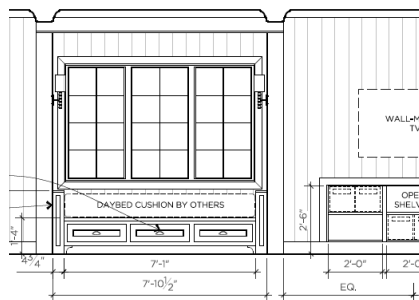
# TAMARA GAVIN

INTERIOR DESIGN

## WHAT'S INCLUDED

### ALL DRAWINGS (CAD AND SKETCHUP)

- Up to (2) phone calls between you and Tamara, including initial project brief.
- Up to (30 minutes) email correspondence time between you and Tamara. Except for our scheduled calls, please communicate only through email: [tamara@themadehome.com](mailto:tamara@themadehome.com).
- Time to review the documents, sketches and drawings you provide - see below.
- Time to layout the base drawing (wall with any features on it such as window, door, soffit....)
- Time to draw the design concept using the information provided. Note that this process is usually quite collaborative between us as I am also a professional designer - not just a drafts person. So, while you will be taking the lead with design direction, I will also be naturally thinking through the design using my trained eye, which is usually appreciated! However, the final deliverable will ultimately convey the preferences and design that you want to show your client. If the drawing ends up taking longer because of factors outside my control including multiple revisions, unclear design direction, design changes mid-process, other project updates, etc, additional charges may apply.
- You may want to see a few options before narrowing it down to what you will show your client. There is an additional charge for each option I have to draw, so think through your design concept as thoroughly as possible to avoid additional charges.
- **One round** of free minor revisions. If the change dramatically impacts the design, additional charges will apply. If possible, please supply the feedback within 2 business days after delivery of design drawing.



### You send me:

Dropbox folder or IVY room board with relevant documents: your sketch, pdf plans, existing pictures, inspiration images, meeting notes with goals, product images + links, etc. Important: You can send me your own .dwg files, but I will be drawing in my own file.

You will need to send me everything before our initial call.

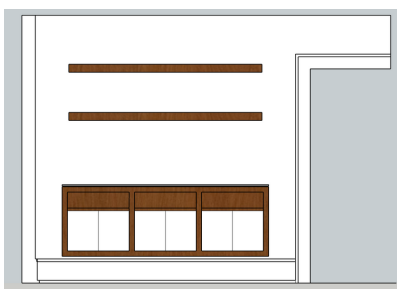
## WHAT'S INCLUDED

### 2D CAD ELEVATIONS DELIVERABLES

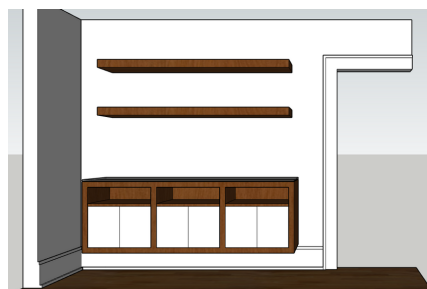
- **I will send you:** One layout in .pdf format on 8.5 x11. Multi-wall projects may be on an 11x17 unless requested otherwise. This is with a generic (non-branded) title block. For an *extra charge*, I will also send you the .dwg file so that you can copy into your own file and use your own title block and make your own modifications. Note that I do not draw in other files and templates other than my own. If you copy the drawing into your own file, you are responsible for adjusting fonts, layers, dimension styles, etc should they become altered. Ask me any questions! If you want your logo in the title-block, there is an additional charge of \$30, and you need to supply me with your logo.
- Each elevation is for a single wall only unless noted as a multi-wall. This means, for example, that I will send you an elevation for the front of the fireplace, but I will not be providing the side views of the fireplace. That will incur additional charges if requested.
- Each 2D CAD elevation is annotated and dimensioned. This is different than SketchUp drawings, which are not annotated or dimensioned.

### 3D SKETCHUP ELEVATIONS DELIVERABLES

- **I will send you:** A variety of views of the design in .jpg image format. For an *extra charge*, I will also send you the .skp file for \$20 so that you can make your own modifications. Note that I do not draw in other files and templates other than my own. For an *extra charge*, I can put the images on a presentation layout with your logo.
- I will apply preset materials and textures that will communicate the design as closely as possible. I will import custom textures if it can be done easily. I don't model products - meaning I import from available models in the online 3D warehouse for sofas, light fixtures, tables, etc.
- SketchUp drawings are not annotated or dimensioned.
- Each SketchUp drawing will likely have 3 views: one flat 2D elevation and two to three 3D views.  
See examples:



2D elevation



3D elevation



3D perspective

# TAMARA GAVIN

INTERIOR DESIGN

## *how I work*

## PROCESS

### HOW LONG DOES IT TAKE?

Expect a turn-around time of about 2-3 weeks for 1-2 drawing items. This starts after our initial call. I try to prioritize revisions. If they are considerable, they will take longer and incur hourly charges. I'll keep you posted if things are looking like they will take longer. Reference my sample timeline.

---

#### 1) INQUIRY

Send me an email with what drawing(s) you need to [tamara@themadehome.com](mailto:tamara@themadehome.com). Reference my rate sheet. You may not know which item your drawing request falls under; that's OK! I will take your request and put together an invoice. Along with the details of your request, make sure you've thought about the following:

- Do you need a 2D CAD drawing or 3D SketchUp rendering? Or both!?
- Do you need to SEE multiple options to decide what is best to show your client?
- Do you need to PRESENT multiple options to your client?
- Do you need one wall or multiple walls drawn?
- Is it a floor plan, ie: furniture layout or tile layout?
- Do you need dimensions and notes?
- Do you also need the original .dwg or .skp files to make your own modifications later?
- Do you want your logo included in the title block?
- Do you need this rushed? Ask me about availability.

#### 2) RECEIVE INVOICE AND MAKE PAYMENT ONLINE

There is a small 1.2% fee through IVY using the ACH payment method. At this time, I can only take online payments and you are responsible for paying the fee. It can take me up to 5 business days to review your inquiry and send you an invoice.

#### 3) SEND YOUR DOCUMENTS

Share your information through a dropbox folder link or IVY Room Board invite. Include anything that is relevant to the design. Usually YOUR sketch is the most important thing. Consider existing pictures, PDF of the plan, inspiration images, measurements, meeting notes with goals, product details, material samples etc. Both Dropbox and IVY Room Boards have the ability to add comments so you can describe what is going on in each file!

#### 4) CALL

After I receive your payment AND project folder/room board, I will email you to arrange a 30-min. call with you to discuss project details. You don't have to do a call if you've organized all the details in an email. If I have questions, please respond promptly.

#### 5) RECEIVE DRAWING

Expect to receive your drawing in about 2-3 weeks. I try to deliver as soon as possible! This all depends on the complexity of the request and my availability. If possible, please send over any revision requests in 2 to 5 business days.. I will do one round of minor revisions (adding notes, changing a material color, etc.) for free. I try to turn revisions around in 2-3 days. After 10 business days following drawing delivery, I will consider your project complete. Updates to past drawings will be done at the hourly rate.